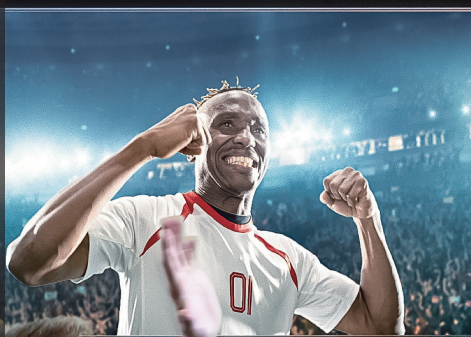




NEW FROM SOLAX X3-PRO G2



X3-PRO G2

8kW/10kW/12kW/15kW
17kW/20kW/25kW/30kW

Features

High-efficiency

- Maximum efficiency is up to 98.5%
- Low startup voltage, ultrawide MPPT voltage range
- 150% DC oversizing, 110% AC overloading output
- In-built global MPP scan for higher yield efficiency

Safe

- SPD type II protection on both AC&DC
- ARC protection (Optional)
- IP66 protection

Smart

- Built-in export power control
- Intelligent load management - heat pump (Adapter Box required)
- 24h monitoring and maintenance (Optional)
- Multiple monitoring methods supported, Optional: WiFi/LAN/4G

Economic

- Ultra-high power density
- Maximum 32A DC input current per MPPT tracker, support high power solar panels
- Up to 3 MPPTs, 2 strings per MPPT
- Support Master/Slave parallel function

Contact Us For More Information

www.solaxpower.com
AU: +61 1300 476529
DE: +49 6142 4091664

Global: +86 571-56260008
UK: +44 2476 586998
NL: +31 (0) 852 737932

info@solaxpower.com
service@solaxpower.com



	X3-PRO-8K-G2	X3-PRO-10K-G2	X3-PRO-12K-G2	X3-PRO-15K-G2	X3-PRO-17K-G2	X3-PRO-20K-G2	X3-PRO-25K-G2	X3-PRO-30K-G2
DC INPUT								
Max. PV array input power [Wp]	12000	15000	18000	22500	25500	30000	37500	45000
Max. PV input voltage [V]	1100	1100	1100	1100	1100	1100	1100	1100
Start startup voltage [V]	200	200	200	200	200	200	200	200
Nominal input voltage [V]	650	650	650	650	650	650	650	650
MPP tracker voltage range [V]	160~980							
No. of MPP trackers	2	2	2	2	2	2	3	3
Strings per MPP tracker	2	2	2	2	2	2	2	2
Max. PV input current [A]	32/32	32/32	32/32	32/32	32/32	32/32	32/32/32	32/32/32
Isc PV Array Short Circuit current [A]	40/40	40/40	40/40	40/40	40/40	40/40	40/40/40	40/40/40
AC OUTPUT								
Rated AC output power [kW]	8000	10000 ^①	12000	15000 ^②	17000	20000	25000	30000 ^③
Rated AC output current [A]*	12.2/11.6	15.2/14.5	18.2/17.4	22.8/21.8	25.8/24.7	30.3/29	37.9/36.3	45.5/43.5
Max. AC output apparent power [VA]	8800	11000 ^③	13200	16500 ^②	18700	22000	27500	30000 ^③
Max. AC output current [A]	13.2	16	19.3	24.2	27.5	33.6	41.8	45.5
Nominal AC voltage/AC voltage range [V]**	220/380V, 230/400V, 3/N/PE, 3/PE; 95-285V							
Nominal AC frequency/AC frequency range [Hz]**	50/60; ±5							
Power Factor range	0.8 leading ~ 0.8 lagging							
THDi (Rated power) [%]	<3							
SYSTEM DATA								
Max. efficiency [%]	98.20	98.20	98.20	98.30	98.30	98.30	98.50	98.50
Euro efficiency [%]	97.70	97.70	97.70	97.80	97.80	97.80	98.00	98.00
Standby consumption (Night) [W]	<3							
Ingress protection	IP66							
Operating ambient temperature range [°C]	-30~+60							
Max. operation altitude [m]	4000							
Relative humidity [%]	0~100							
Typical noise emission [dB]	<35	<35	<35	<55	<55	<55	<55	<58
Storage temperature [°C]	-30~+60							
Dimensions (WxHxD) [mm]	482x417x186							
Weight [kg]	24.5		26				28	
Cooling concept	Natural cooling				Smart fan cooling			
Communication interfaces	USB / RS485 / DRM, Optional: Meter							
Optional monitoring dongle	Pocket WiFi/LAN/4G							
Display	2 x LED + LCD (16 x 2) / APP							
PROTECTION								
Over/under voltage protection	YES							
DC isolation protection	YES							
Grid monitoring	YES							
DC injection monitoring	YES							
Residual current detection	YES							
Anti-islanding protection	YES							
Over Temp protection	YES							
SPD (DC/AC)	Type II / Type II							
AC auxiliary power supply (APS)	Optional							
Arc-fault circuit interrupter (AFCI)	Optional							
STANDARD								
Safety	IEC/EN 62109-1; IEC/EN 62109-2; NB/T 32004							
EMC	EN IEC 61000-6-1/2/3/4, EN IEC 61000-3-2/11, EN 61000-3-3/12, EN 55011, EN 62920IEC/EN 61000; NB/T 32004							
Certification	VDE4105, EN 50549, AS 4777.2, IEC 61727, IEC 62116, IEC 61683, IEC 60068, EN 50530, NB/T 32004							

* The two data refer to different grid voltage 220V/230V

** The AC voltage and the frequency range may vary from different country codes

①9999 for AS4777.2 ②14999 for AS4777.2 ③29999 for AS4777.2

*V2.6. Information may be subject to modify without notice. 650.00004.00